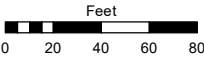


(#5395)  
**SILVER DOLLAR ESTATES**  
**AREA 1 - PHASE 2**  
 PORTION OF N½ SECTION 8  
 T20N - R19E

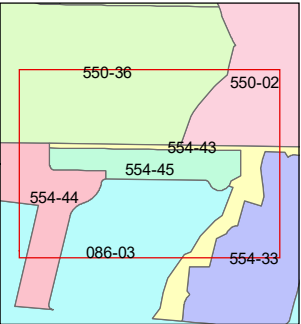
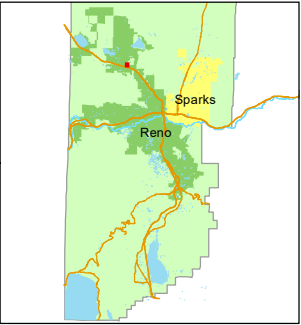
Assessor's Map Number

**554-45**

STATE OF NEVADA  
**WASHOE COUNTY**  
**ASSESSOR'S OFFICE**  
 1001 East Ninth Street, Building D  
 Reno, Nevada 89512  
 (775) 328-2231



1 inch = 80 feet



created by: SR 11/19/2020

updated: \_\_\_\_\_

area previously shown on map(s):

086-03

NOTE: This map was prepared for the use of the Washoe County Assessor for assessment and illustrative purposes only. It does not represent a survey of the premises. No liability is assumed as to the sufficiency or accuracy of the data delineated hereon.